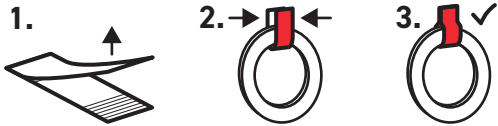


## Introducing: Circuit Tape!

**Circuit Tape** is conductive tape used for making paper circuits. It comes in two forms: Copper Circuit Tape and Fabric Circuit Tape.

We have found that Fabric Circuit Tape can be easier to get started with, so we are switching from Copper to Fabric Circuit Tape in our kits. Where instructions say "copper tape," please know that you can use Fabric Circuit Tape in the same way! Learn more at [www.chibitronics.com/tapes](http://www.chibitronics.com/tapes)

To keep your Circuit Tape from falling off the loop, we've created a handy tape tag. Here's how to assemble the tag:



Questions or comments? Please message us at [info@chibitronics.com](mailto:info@chibitronics.com)  
Happy Making!

