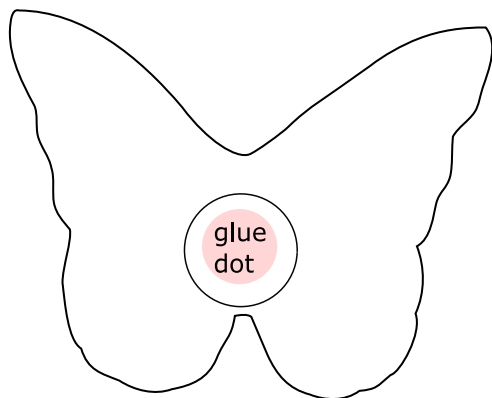


Not to scale

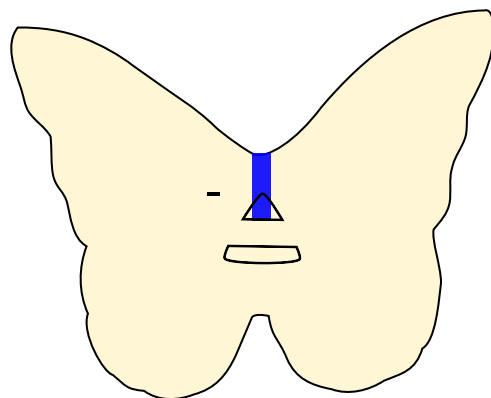
1

Apply a glue dot to the back of the circuit layer, slightly below the center.



2

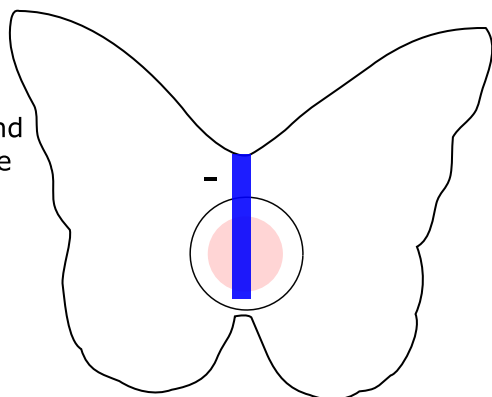
Apply conductive fabric tape to the front of the circuit layer to create the negative trace.



3

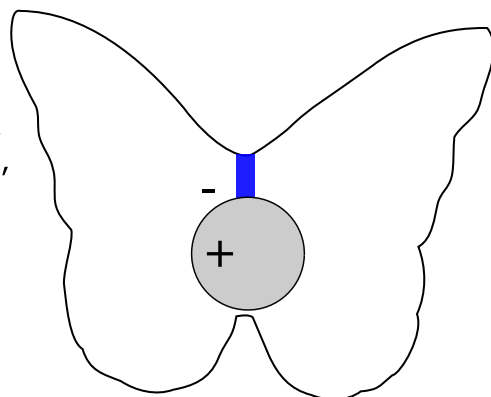
Wrap the tape around to the back, over the glue dot, extending below the center.

Trim off the excess.



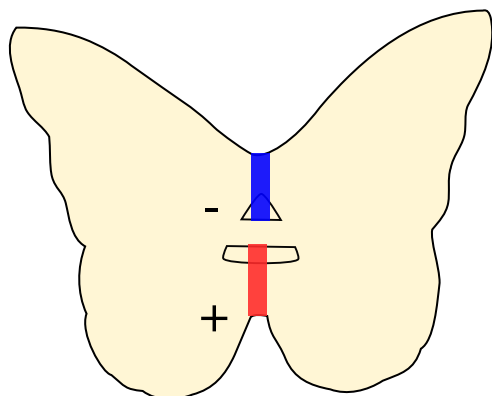
4

Adhere the battery, negative side down, over the glue dot and negative trace.



5

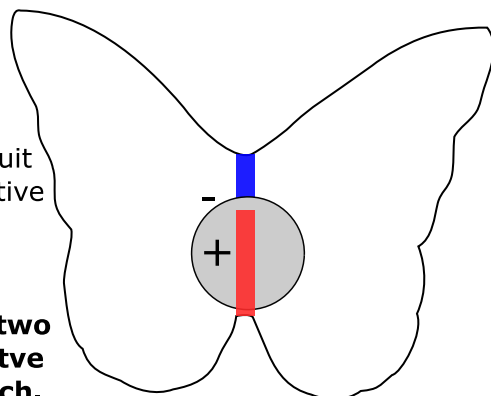
Apply conductive fabric tape to the front of the circuit layer to create the positive trace.



6

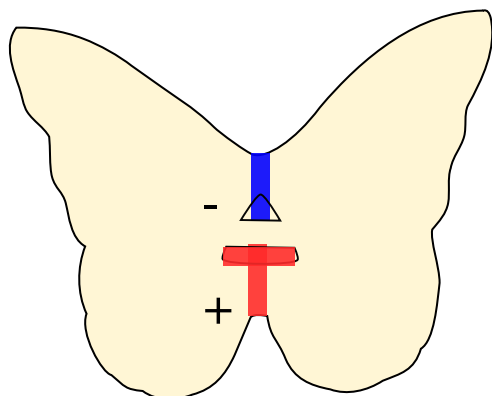
Wrap it around to the back of the circuit layer, over the positive side of the battery, and trim.

Do not allow the two pieces of conductive fabric tape to touch.



7

On the front side, apply a patch of conductive fabric tape over the positive trace, perpendicular to its top edge.



8

Add an LED Sticker.

The broad, positive end of the sticker should overlap the positive trace & the narrow, negative end should overlap the negative trace.

